



Cable ID: 1397/09/19 00013

Date / Time: 12/10/2018 01:06:51 PM

Headroom 5.4 dB (NEXT 36-78)

Test Limit: TIA Cat 6 Perm. Link

Cable Type: Cat 6 F/UTP

NVP: 70.0%

Operator: P.B.N

Software Version: V4.3 Build 6

Limits Version: V4.3

Calibration Date:

Main (Module): 07/29/2018

Remote (Module): 07/29/2018

Test Summary: PASS

Model: DSX-5000

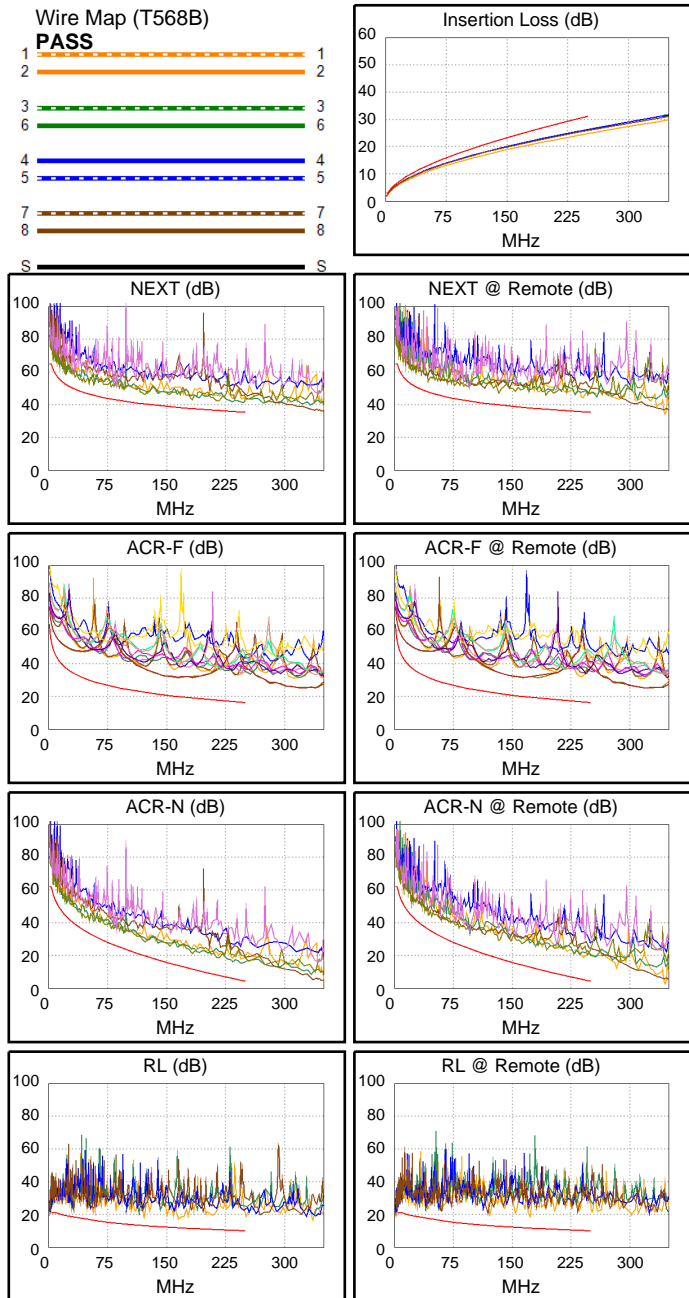
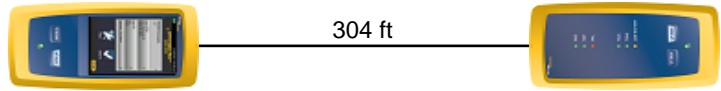
Main S/N: 3338088

Remote S/N: 3338058

Main Adapter: DSX-PLA004

Remote Adapter: DSX-PLA004

Length (ft), Limit 295	[Pair 12]	304
Prop. Delay (ns), Limit 498	[Pair 45]	473
Delay Skew (ns), Limit 44	[Pair 45]	31
Resistance (ohms)	[Pair 45]	14.3
Insertion Loss Margin (dB)	[Pair 36]	4.8
Frequency (MHz)	[Pair 36]	250.0
Limit (dB)	[Pair 36]	31.1



Worst Case Margin Worst Case Value

PASS	MAIN	SR	MAIN	SR
Worst Pair	36-78	36-78	12-45	12-36
NEXT (dB)	5.4	6.5	5.7	8.7
Freq. (MHz)	182.5	42.8	245.0	240.5
Limit (dB)	37.6	47.8	35.5	35.6
Worst Pair	12	45	12	12
PS NEXT (dB)	6.0	6.4	6.1	9.5
Freq. (MHz)	234.5	95.8	245.0	240.0
Limit (dB)	33.2	39.6	32.9	33.0

PASS	MAIN	SR	MAIN	SR
Worst Pair	36-45	45-36	36-45	36-45
ACR-F (dB)	11.3	11.3	11.6	12.5
Freq. (MHz)	4.4	4.4	166.0	183.5
Limit (dB)	51.4	51.4	19.8	18.9
Worst Pair	36	36	36	36
PS ACR-F (dB)	12.2	12.3	14.4	14.8
Freq. (MHz)	1.1	1.3	188.5	189.5
Limit (dB)	60.2	59.3	15.7	15.6

N/A	MAIN	SR	MAIN	SR
Worst Pair	36-78	36-78	12-45	12-36
ACR-N (dB)	7.0	7.7	10.5	13.4
Freq. (MHz)	38.3	21.9	245.0	240.5
Limit (dB)	37.5	44.2	4.7	5.2
Worst Pair	36	36	36	36
PS ACR-N (dB)	8.3	8.5	11.9	15.0
Freq. (MHz)	47.0	42.8	250.0	247.0
Limit (dB)	32.3	33.6	1.6	1.9

PASS	MAIN	SR	MAIN	SR
Worst Pair	78	12	12	12
RL (dB)	4.3	4.4	4.5	6.9
Freq. (MHz)	32.0	4.9	170.5	173.0
Limit (dB)	18.5	21.0	11.7	11.6

Compliant Network Standards:
 10BASE-T 100BASE-TX 100BASE-T4
 1000BASE-T 2.5GBASE-T 5GBASE-T
 ATM-25 ATM-51 ATM-155
 100VG-AnyLan TR-4 TR-16 Active
 TR-16 Passive